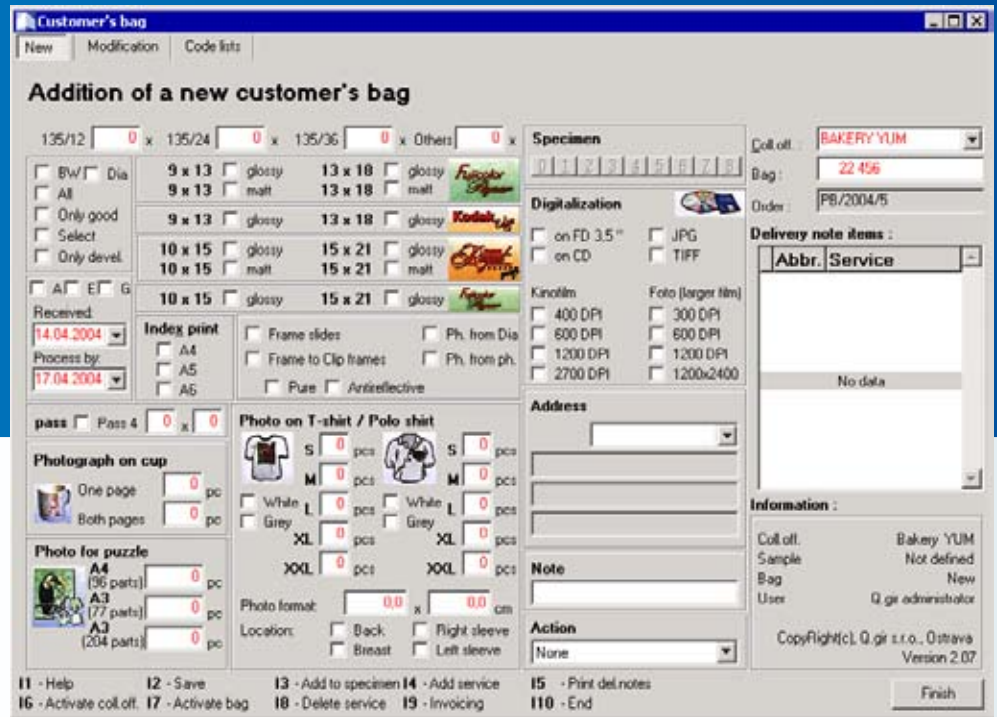




Additional modules serve for tailor-made solution of problems and integration of the Information System K2 into the Client's environment.



## Effectiveness of implementation

With implementation for every Client, we are enriched by new experience as concerns effective solution of problems in Client's concrete line of business. Owing to a long-term experience in implementation of the IS K2, we have a lot of knowledge and, therefore, general upgrade modes are created by means of which it is possible to make variety of activities more effective. By making use of these upgrade modules, it is possible to reduce time necessary for implementation and, thereby, achieve the aim – to implement the Information System K2 in optimal manner – more effectively.

## Electronic production rendering

The production rendering is usually the first point for adaptation of the IS K2 to the specific conditions and environment of the Client concerned. The reason thereof is not only influence related to the environment, such as dustiness, humidity, and higher requirements for periphery ensuring communication with the firm's IS K2 directly from the particular production shops, but also requirements as concerns quickness, topicality, and self-service. The quicker are production results induced into the system, the more updated picture is provided about dates and contracts in progress. At the same time, direct responsibility for the data origin is applied and requirement for additional administrative staff for inserting updated production data is reduced.

## Wireless stock control

Physical reception and release of stock items by means of the bar code has been modernized and transferred into wireless system of stock control. It is not necessary to solve mobility of the fixed scanners and on-line information in the system is provided. Furthermore, it has been possible to limit applications processing preparation of contracts within the mobile manual terminals. Solution using application directly in the IS K2 scripts has been proved in practice, as any change or modification is projected directly to all users of the mobile equipment thanks to the wireless terminal connection. The stockkeeper completes operatively the individual contracts, whereby correctness of each items is checked by the system automatically. By communication of the mobile equipment with the IS K2 by means of a terminal, updated information about the state of contracts in progress and stock level, location of goods etc. is maintained.

## EDI

For electronic communication of the IS K2 with other systems of the contractors and customers, it is possible to use the EDI (XML) format. In particular, it concerns automated processing of a calling off in the automobile industry or electronic exchange of documents with commercial chains in agreed formats.



## Data transfer for VZP (health insurance company)

For organizations using products integrated into VZP code lists, a module for loading items from these code lists incl. prices into the IS K2 to the article cards has been prepared. The module enables to record and to insert remittances and subsequently to generate invoices for insurance companies. Remittances for the particular insurance companies are sorted according to the groups of articles. Generation of benefits in electronic form is available so that correction benefit received from the insurance company is processed retroactively in the system. Creation of statistics over remittances included therein provides the user with an operative overview.

## Communication with weighing systems Bizerba

Transfer of documents between the IS K2 and a weighing system is provided in such a way that created orders from customers are processed in the IS K2 after end of the shift and, pursuant to a setting, groups of such documents are being sent for weighing. There, actual quantity withdrawn by the customer is weighed. Actual weight (quantity) is sent back into the IS K2 and the quantity is changed in the appropriate documents according to the really weighed quantity. Documents are printed automatically and marked by means of the weighing system together with print of labels. In the IS K2, it is possible to keep information about name of an article, its composition, tare, durability etc. Such data are sent to the weighing system where a label is printed for the product being weighed with information about the item and with its actual weight.

## Retail sale

For the self-service shops, comprehensive cash register system has been prepared, except for connection of the IS K2 to electronic scale with direct print of labels. It concerns a possibility to sell goods by means of the bar code, connection of cash registers, sale by means of PLU, support provided for all systems concerning method of payment (including luncheon vouchers), and automated creation of daily balances. These shops can be connected to the centre both off-line and on-line.

## Electronic ordering

For easy offering and subsequent ordering of goods, it is possible to use this application allowing distribution of selected data about articles by means of a CD ROM. This application is created by businessmen who want to provide the customer with his/her catalogue and, subsequently, to automate reception of orders. An order created by the customer is transferred electronically (e.g. via e-mail) to the contractor, where a contract is created automatically pursuant to ordered articles. It is possible to archive orders in the application for the purpose of subsequent check of ordered goods. Application enabling ordering can serve also as an electronic catalogue. For every item of goods, it is possible to define a catalogue sheet in which any information of the product in question can be included. Displayed data can differentiate in various categories.

## Identification of the user in the system by means of a chip card

Chip cards used for identification of persons by the attendance system can serve as a security element for starting and terminating work in the IS K2. Usage of the card by means of appropriate hardware is a pre-requisite for starting the IS K2. Removal of the card from the scanner terminates automatically the application after set-up time interval. Thereby, uniqueness of performed operations as well as check of the output of responsible person are increased.

## PC configurator

It enables to establish specifications according to the appropriate groups of goods for user-friendly creation of valid production variants. Setting of acceptable combinations does not limit system and determination of dealer prices. A result thereof is direct transfer of the selected variant into the production job card. Thereby, creation and check of manufacturability is ensured – product configuration not only for the dealer directly in the contract, but also for the customer on the web.